

## eMAM & Archiware P5 Archive

### Comprehensive solution for online content management

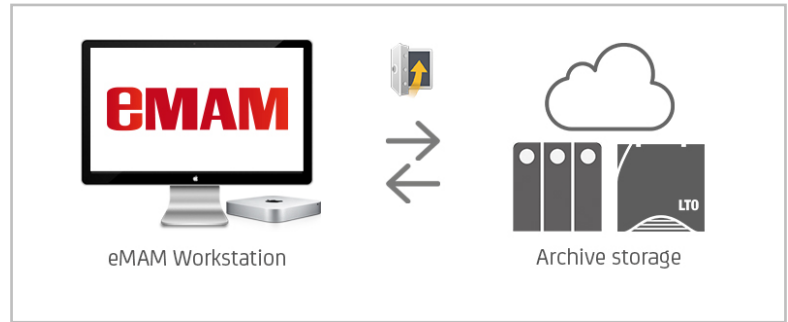
The logical extension of a MAM system is an Archive. This way, files that are no longer needed for daily production can be moved offline to cheaper LTO tape storage.

eMAM is a powerful media asset management platform that provides users an intuitive web interface to collaboratively produce, share, and deliver video and other media. Artists and designers use integrated tools inside Adobe Creative Cloud and Apple Final Cut systems. eMAM has built-in tools and over 80 technology partners. It manages native resolution files and integrated workflow processes needed by leading organizations worldwide since 2006 in local, cloud, and hybrid environments. eMAM helps organizations respond to emerging demands with scalability, easy reconfiguration, and multiple ordering options: by purchase, by subscription, or by turnkey cloud SaaS and VM/PaaS.

**P5 Archive** supports LTO drives and libraries from virtually any manufacturer such as Tandberg, SpectraLogic, IBM and Quantum, to name just a few, so it can be run in any storage environment. Archiving and restoring processes run in the background, but the status can be monitored in the eMAM dashboard.

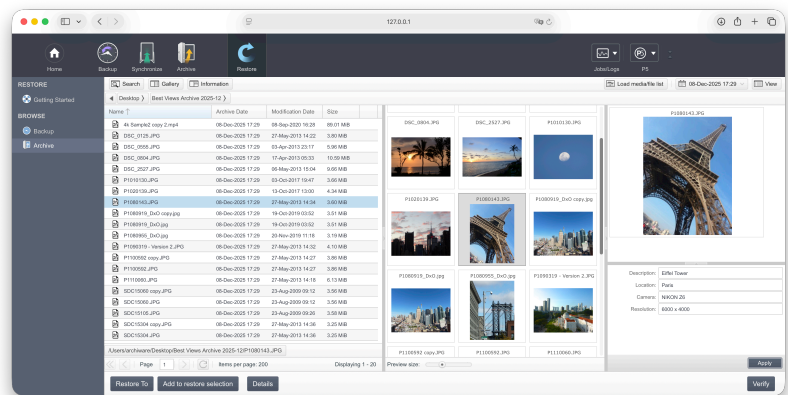
Cloning adds professional level security by creating two identical tape sets, one for off-site storage. Scalability regarding performance and number of archive/restore jobs running simultaneously is provided by the Archiware P5 Archive parallelization feature.

Content is managed via the web interface. For the user, assets remain searchable and proxies can be viewed independent of their location. Using the same web interface, single files, groups of files, folders and categories can be moved to or retrieved from the Archive through the integration with Archiware P5 Archive.



#### Advantages of the eMAM/P5 solution:

- ✓ Fully web based application with browser access
- ✓ Archive and restore through Archiware P5, triggered from eMAM interface
- ✓ AI tagging aids in search
- ✓ Economic use of precious expensive storage thanks to easy archiving
- ✓ Automated, rule based archiving processes
- ✓ Professional long-term storage on LTO tape
- ✓ Options for tape cloning and parallelization
- ✓ Part of a complete integrated workflow system in local or hybrid cloud



#### Options, Configurations, Interfaces...

We are happy to advise: [www.emamsolutions.com](http://www.emamsolutions.com) [emamsales@empressmam.com](mailto:emamsales@empressmam.com)  
[www.archiware.com](http://www.archiware.com) [team@archiware.com](mailto:team@archiware.com)

