

ARCHIWARE

data management made **simple**

The Archiware P5 Platform



The Archiware P5 platform offers different modules.
Use individually or combined to achieve maximum data security:



P5 Synchronize

Replicate data to disk and cloud to ensure high availability.



P5 Backup

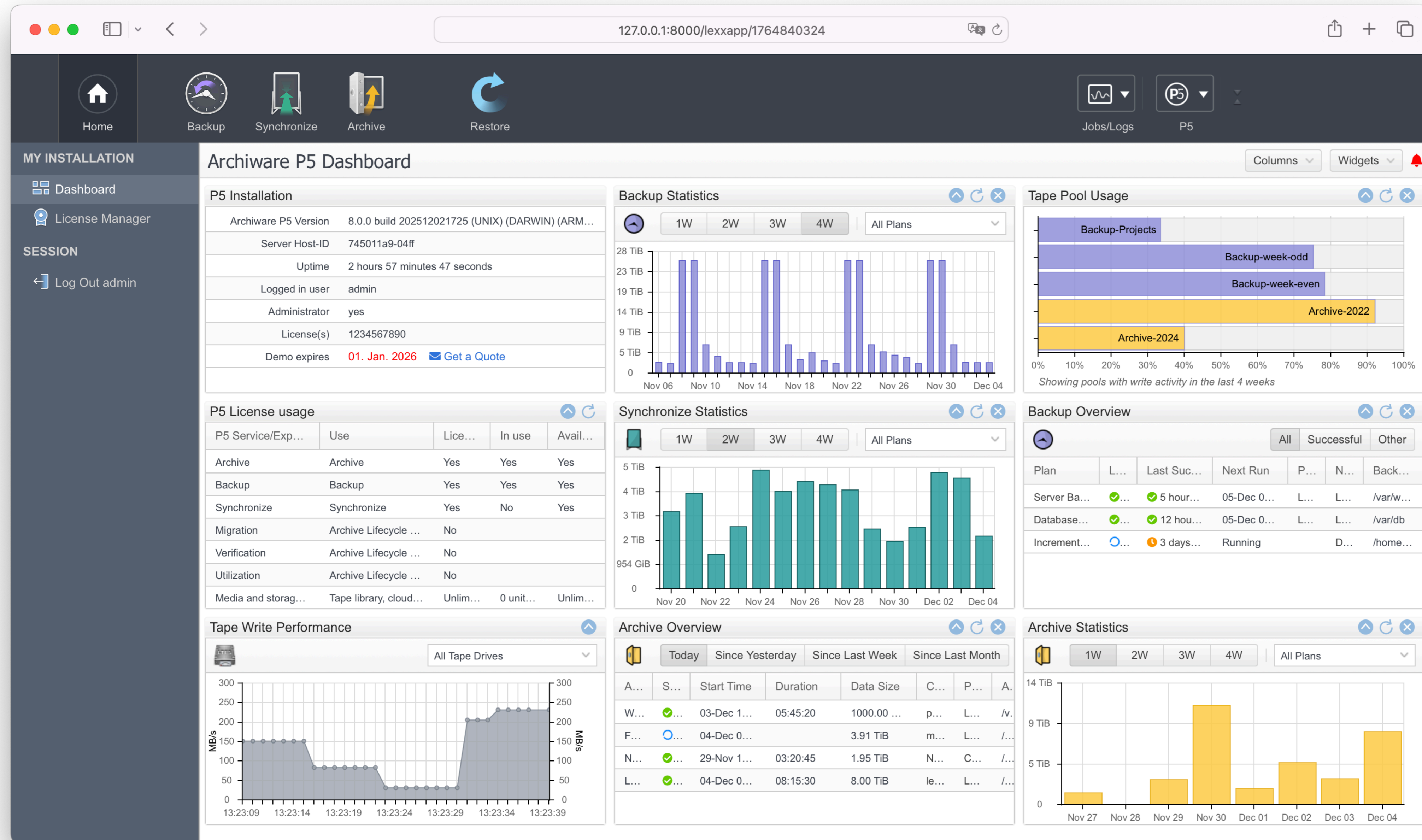
Back up server data to disk, tape and cloud.



P5 Archive

Move or migrate data offline to disk, tape and cloud.

The Archiware P5 Platform



A customizable dashboard made up of multiple information panes visualizes backup, archive and cloning activities over selectable periods of time.

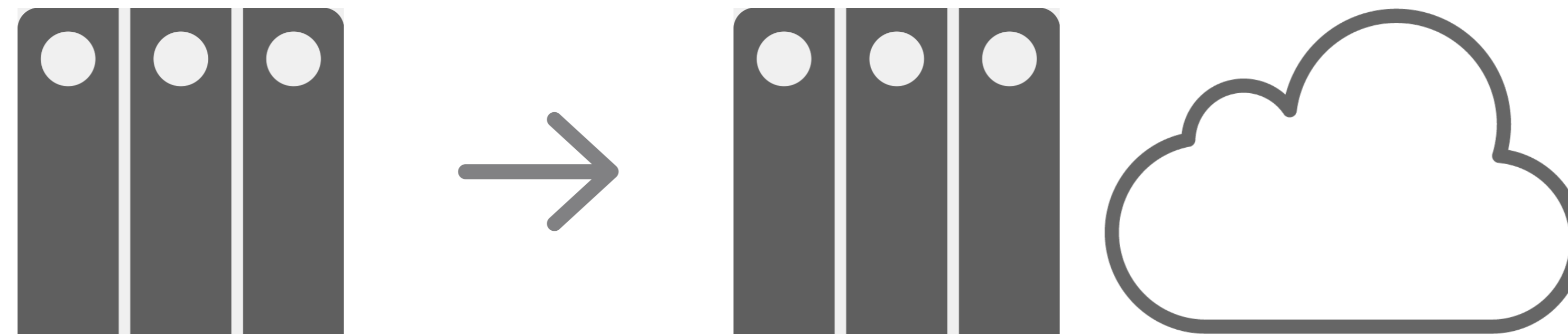
What is Data Management?

- ✓ Having your time-critical data available when it's needed
Distribute, collect or restore data for an uninterrupted workflow
- ✓ Making sure data is safe at all times
Replicate and back up data on different media, store at different locations
- ✓ Only keeping data online as long as it's used
Save costs on expensive, fast online storage
- ✓ Archiving data at the end of its lifecycle
Keep data on long-term storage media and maintain a catalogue for easy restore

P5 Synchronize



Replicates data between disk, RAID, NAS, SAN and to the cloud.



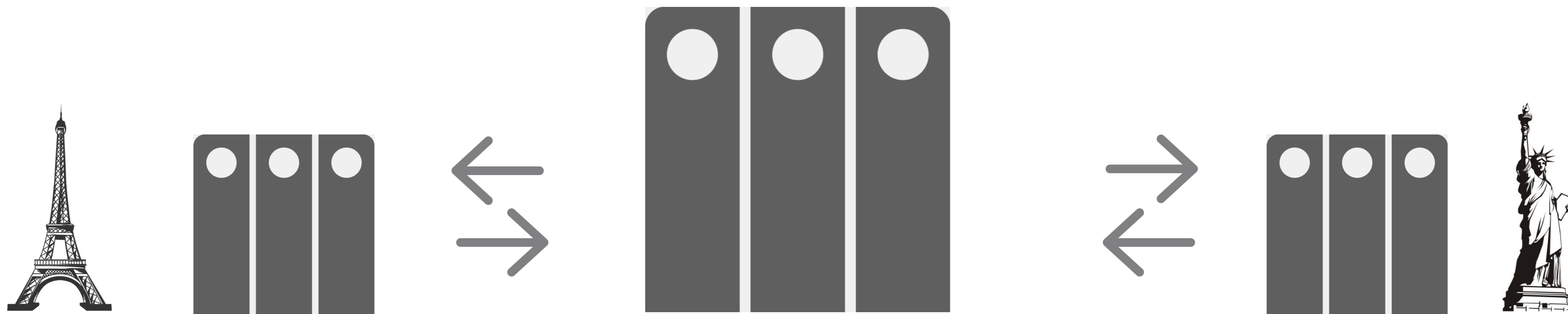
- ✓ Easy data distribution - local, network, remote, cloud
- ✓ Open file system for immediate availability - no restore
- ✓ Across all platforms (Mac, Windows, Linux, FreeBSD, QNAP, Synology, NETGEAR)

P5 Synchronize: Data Distribution and Collection



Data centralization:

Replicates production data from remote locations to central repository.



Data distribution:

Central repository replicates to remote locations

P5 Backup



Creates security **copies** on disk, tape or cloud storage

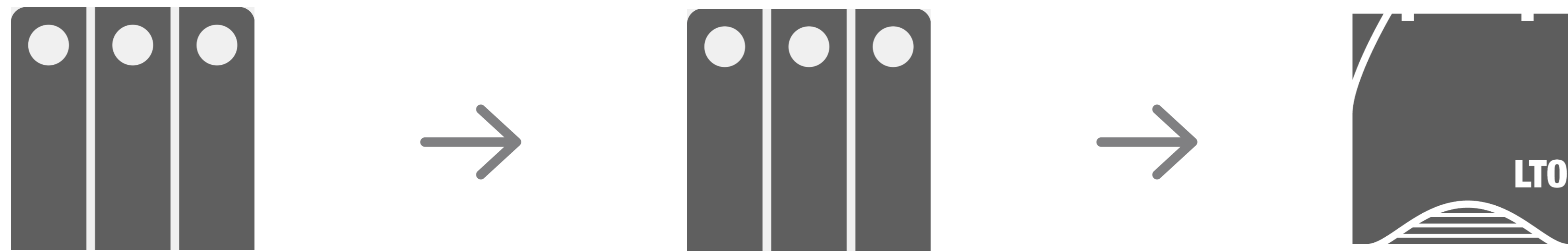


- ✓ Full, incremental or progressive backup
- ✓ Easy user restore from client machine
- ✓ Long retention and offsite storage for maximum security

P5 Synchronize & P5 Backup: Disk-to-Disk-to-Tape



A two-step approach for extra security



P5 Synchronize:

Replicate data from production storage to secondary storage for **immediate availability**

P5 Backup:

Back up data from secondary storage to LTO tape for **disaster recovery**

P5 Archive

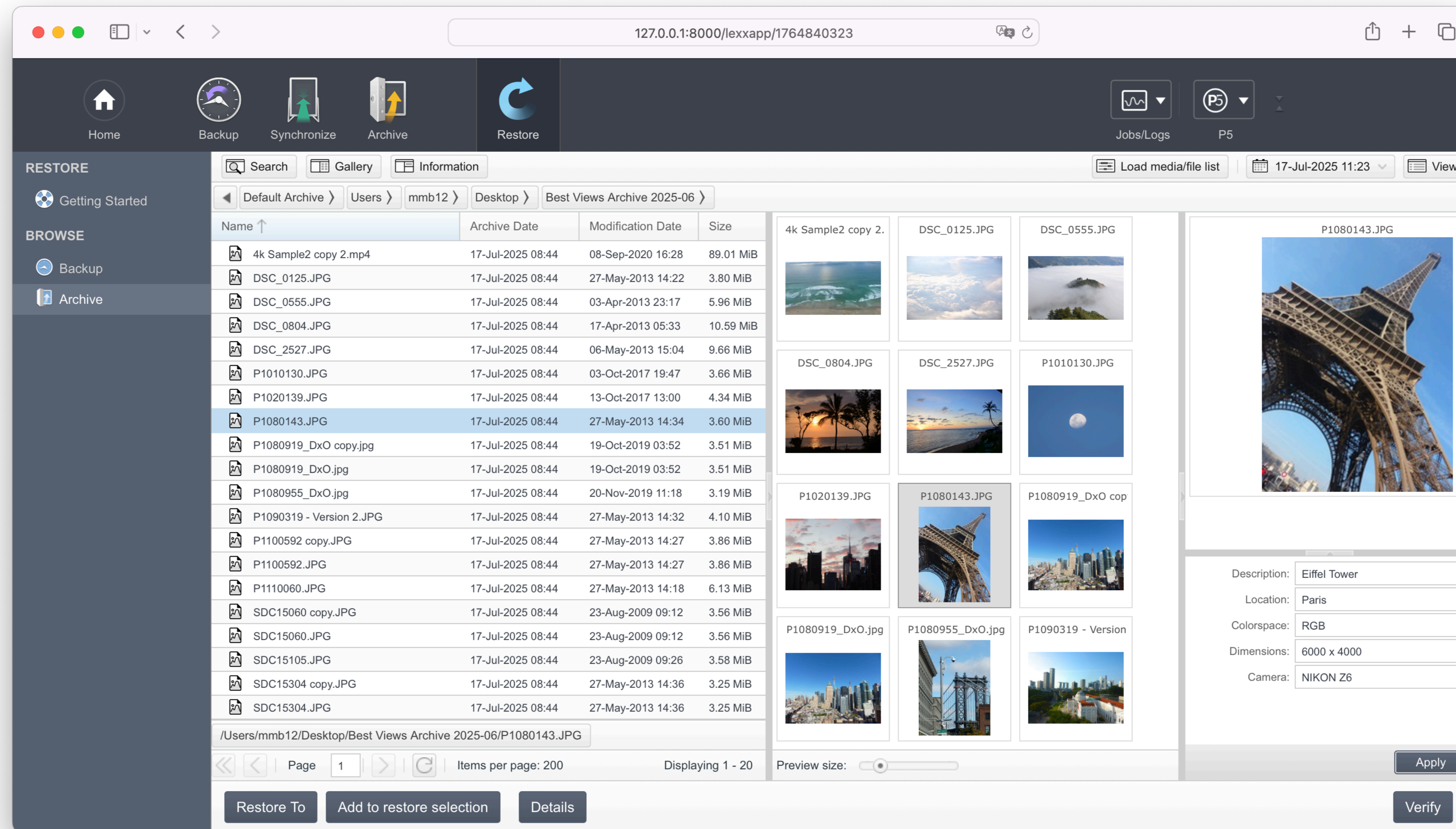


Migrates data to disk, tape or cloud for long-term storage



- ✓ Write in parallel on multiple drives for increased speed
- ✓ Clone tapes and store offsite for maximum data security
- ✓ Option for incremental archiving to save time and resources

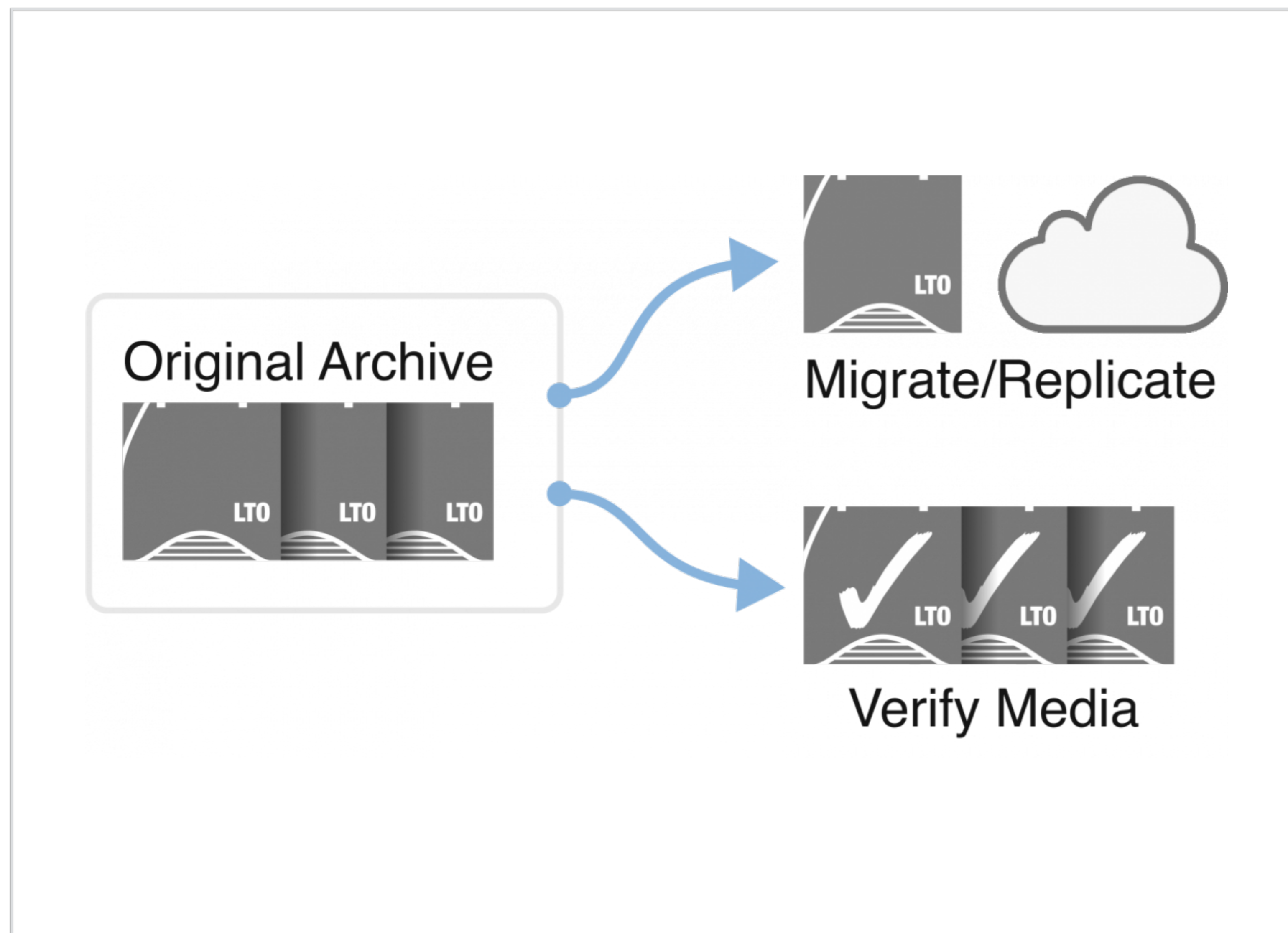
P5 Archive: Restore Catalog



- ✓ User restore of single files or collections from Archive catalog
- ✓ Browse and search, including previews and metadata
- ✓ Storable searches for quick results and collaborative workflows

Add-on: P5 Archive DLM

Automated **data lifecycle management** for policy-based moving & copying of archived data between disk, tape & cloud



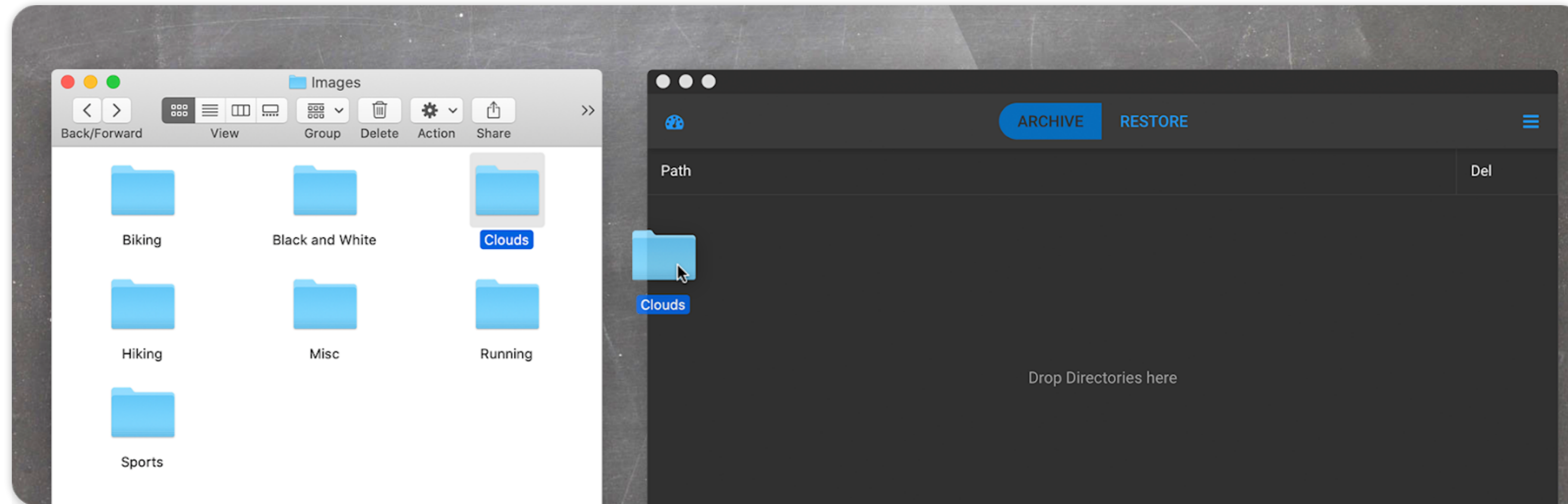
Moving: Data is moved from existing to new archive storage. After completion, all data is deleted on the original archive storage.

Copying: Data is copied to create redundancy on a new archive storage. The previous archive storage remains unchanged.

- Migrate/copy data between storage tiers
- Automatic archive verify
- Disk, LTO & Cloud
- Project-based storage monitoring
- Policy-based
- Optimized storage, cost and security

Add-on: P5 Companion

Drag-and-drop to archive and restore with P5 Archive



- Drag-and-drop folders from local or network storage to archive to tape, disk or cloud storage
- Runs on any macOS, Windows or Linux workstation computer
- Just an Archiware P5 Archive license required, no per-workstation licensing
- Archived files replaced with small 'stub' files that point to the original in the archive
- Drag-and-drop these stub files to restore
- Search/browse/restore from the P5 Archive index in a web browser
- Available with P5 Archive version 6

P5 Archive: Third-Party Integration

Archiware P5 Archive is integrated with numerous MAM and DAM Systems including:



- ✓ Archive and restore from within the MAM/DAM system
- ✓ View online/offline status of media in the MAM/DAM
- ✓ Use MAM-generated previews and metadata in P5 Archive

General Features

- ✓ Three independent modules that can be combined, plus add-ons
- ✓ User-friendly browser interface
- ✓ Consistent user concept throughout all modules
- ✓ Step-by-step introduction for easy setup
- ✓ Scalable and extendable license model
- ✓ Integration with numerous software partners, e.g. MAM, ingest

Technical Features

- ✓ Fits into existing storage environment
- ✓ Runs on Mac, Windows, Linux, FreeBSD, QNAP, Synology and NETGEAR
- ✓ Data management across platforms (e.g. replication Mac to Linux)
- ✓ Makes joint use of storage hardware
- ✓ Supports RAID, SAN, XSAN, NAS and iSCSI storage
- ✓ Compatible with virtually any LTO Tape hardware on the market

ARCHIWARE

download the 30-day [free trial!](#)

[DOWNLOAD](#)