



# BACKUP. MADE IN GERMANY.

High-performance data backup and restore  
with Archiware P5 Backup.



## P5 Backup is software for professional use that can be set up within minutes.

P5 Backup lets you back up server data to disk, tape or the cloud as well as back up and restore cross-platform. The module works seamlessly with P5 Synchronize and P5 Archive, allowing broad data availability options.

## Server Backup to Disk, Tape and Cloud

P5's server backup is browser based and allows easy configuration, administration and monitoring – regardless of your location. The backup will include all your data as well as extended attributes, permissions, resource forks etc.

Through parallelization, P5 Backup software supports multiple drives, tasks and clients simultaneously. Even large data sets can be backed up in the shortest time possible. Backups are interruptible, and will be filled in automatically with the next run. Even partial backups are restorable.

Growing with your requirements, P5's modular design allows for optimal scaling to fit your needs. There are no limits to possible growth: you can easily add further Archiware products, hardware or media to expand your setup. The same hardware can also be used to operate P5 Archive.

Flexibility and efficiency is extended with the Backup to the cloud feature. This enables you to access your data more easily, while saving hardware and administration costs. Supported clouds include Amazon S3, Amazon Glacier, Google Cloud, Hitachi S3, Microsoft Azure, Wasabi S3, Backblaze B2, and Generic S3. Access to Wasabi storage is built-in to P5. Manual configuration of the Wasabi end-point DNS names is not required.



**Versions & Snapshots**



**Interruptible**



**User Restore**



**Offsite Storage**



**Long Retention**

### SOFTWARE HIGHLIGHTS

- Back up server data
- To disk, tape or cloud
- Easy user restore
- Long retention times
- Tape cloning
- Offsite storage

### TECHNICAL FEATURES

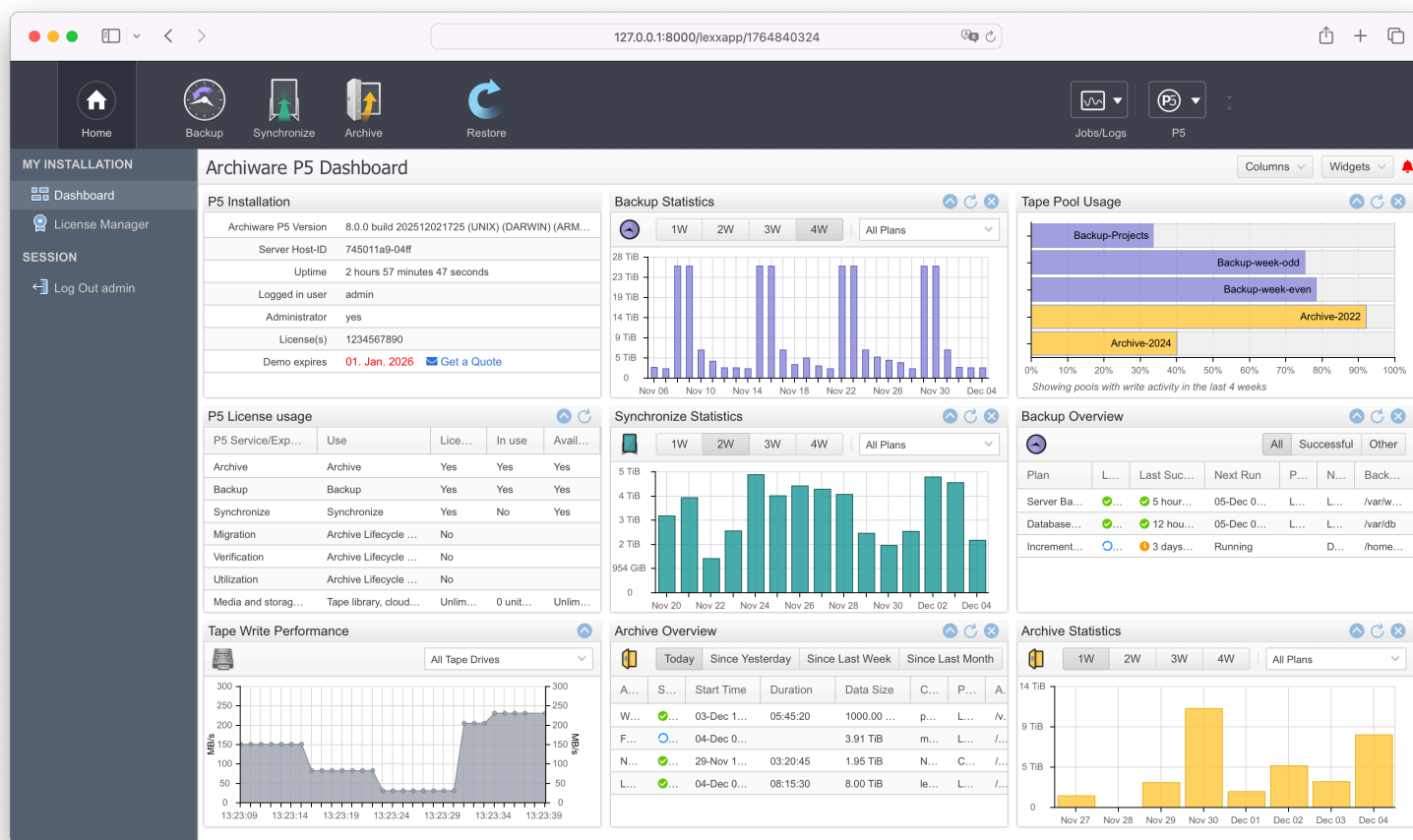
- Data Duplication (copy)
- Full, incremental, progressive
- Interruptible
- Encryption
- File Filters/Policies
- Restore between platforms

### OS SERVER & CLIENT

- macOS
- Windows
- Linux
- FreeBSD
- Synology
- QNAP
- NETGEAR

### FILE SERVER

- ExtremeZ-IP
- Helios
- Xinet
- Netatalk



## Easy Restore

P5 Backup software stores your data in a platform-neutral format, allowing you to back up and restore data from and to any platform. Archiware's block-direct positioning allows for fast restore, no sequential seeking needed. Snapshots offer restores from a particular point in time. The administrator can allow users to search, browse and/or restore, making Archiware P5 even more flexible.

## Incremental Backup

Incremental Backup only backs up files which have been added or modified since the last backup run. Since files are continuously backed up, even during long out-of-office periods, the volume of data for each backup increment remains small. Hence, network and server loads are kept to a minimum.

## Offsite Safekeeping

Real security for your data can only be achieved through offsite backup. By cloning your backup on a second set of tapes or disks, you are ready for offsite storage for real disaster prevention. Ideally, this second set should be stored in a safe place and not in your primary office. Encryption options protect your data during transfer and on the media.

## Encryption

Files can be encrypted during transfer over a network and/or on the storage media. In addition, P5 also backs up access rights and ACLs of a file. The data is only unencrypted when restored to the workstation. This protects files against unauthorized access after a restore. Access to view a workstation's index of saved files is managed via group-based access rights.

### OPERATING SYSTEM REQUIREMENTS

<b>macOS</b>	Intel x86 (64-bit): OSX 10.9 – 15.x Apple M1: OSX 11.x – 15.x
<b>Windows</b>	Server 2012R2, 2016, 2019, 2022 Windows 10, 11
<b>Linux</b>	Intel/AMD x86 64-Bit systems with glibc version 2.15 are supported, including: OpenSUSE 12.2+/ SLES 12+, CentOS 7+/RHEL 7+/Fedora 19+, Ubuntu 12+, Debian 8+
<b>FreeBSD</b>	Version 13, 14 (Intel/AMD x86 64-Bit CPU)
<b>Synology</b>	DSM operating system 5.2+ - 7.0+ (Intel/AMD x86 64-Bit)
<b>QNAP</b>	QTS Operation System 4.3.0+, QTS hero, QTScloud (Intel x86 64-Bit)
<b>NETGEAR</b>	ReadyNAS OS 6.6.0+, Intel/AMD x86 64-bit TrueNAS Scale (Installation through TrueNAS GUI)
<b>Virtualization</b>	x86 – VMware, Parallels, Linux-Xen, Hyper-V

### HARDWARE REQUIREMENTS

<b>Base core</b>	2 cores and 8 GB RAM
<b>Additional per LTO drive</b>	2 cores and 8 GB RAM
<b>Storage</b>	SSD/NVMe required for installation and backup/ archive indexes (minimum 20 GB)

### BROWSER REQUIREMENTS

<b>Safari</b>	13+
<b>Firefox</b>	70+
<b>Chrome</b>	80+