

LucidLink and Archiware P5

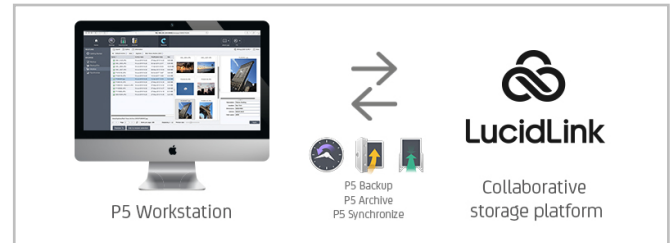
LucidLink Filespaces protected by Archiving, Backup and Cloning

LucidLink's Filespaces facilitate global collaboration for media production. It increases efficiency by consistent file views and eliminating version conflicts. LucidLink's on-demand streaming feature optimizes bandwidth and offers immediate file access and playback. The end-to-end encryption and granular access controls offers maximum security. Its cloud-native architecture scales efficiently, aligning storage costs with usage needs. LucidLink's technology enables real-time access to cloud-stored data, streaming files directly without downloads, and ensuring data access from anywhere for boosted productivity.

Maximizing Efficiency with Archiware P5 and LucidLink

Combining Archiware P5 with LucidLink empowers data management by seamlessly integrating archiving, backup, and synchronization.

P5 Backup safeguards ongoing production through scheduled, automatic backups to disk or LTO, ensuring redundancy, disaster recovery, and protection against data loss. P5 Synchronize provides real-time mirroring for critical operations, enabling fast fail-over and continuous availability. P5 Archive offers long-term preservation of completed projects and assets, becoming the company's file memory and single source of truth.

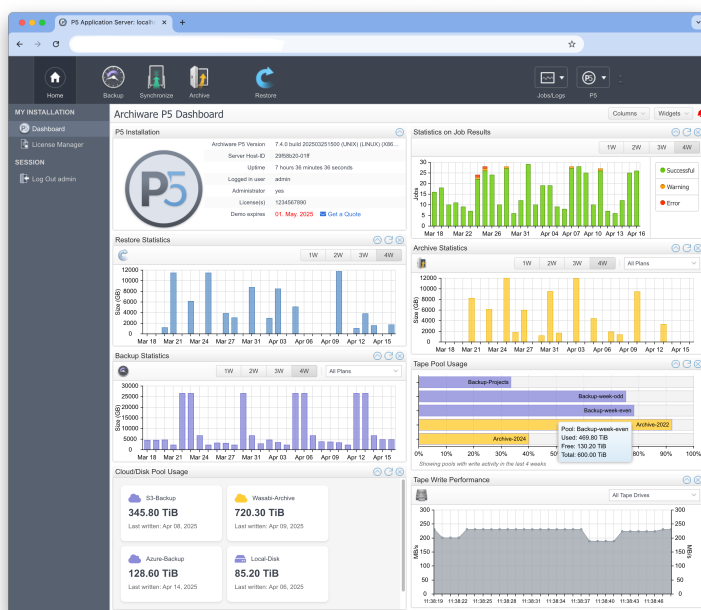


Its catalog makes it easy to browse, search, and retrieve files for reuse, reference, or monetization, essential for responding to returning client requests for past projects or specific clips.

The archive index includes MAM-like features such as image thumbnails, video proxy clips, customizable metadata fields, and combined search options.

The P5 Archive DLM add-on further future-proofs the archive with policy-based replication, migration, and verification. It ensures flexibility to adapt to changes in security policies, storage strategies, or pricing models with ease.

The benefits of combining LucidLink with Archiware P5 include platform and storage-agnostic data protection by redundancy and backup, long-term storage by archiving and easy retrieval with a MAM-like catalog.



Advantages of the LucidLink & Archiware solution:

- ✓ One Solution for all platforms
- ✓ One browser interface for all modules
- ✓ Scalable cloud architecture
- ✓ Immediate access & streaming
- ✓ Automated archiving and data migration
- ✓ Parallelization for speed and scalability
- ✓ Simple, one-click restore
- ✓ Long-term data storage in the cloud

Options, Configurations, Interfaces...

We are happy to advise:

www.lucidlink.com

www.archiware.com

sales@lucidlink.com

sales@archiware.com

