



BACKUP FOR EVERYONE. EVERYWHERE.

Professional, central backup for workstations with Archiware P5 Backup2Go.



P5 Backup2Go is only available in maintenance mode for 5 years from P5 version 7.1 onwards.

P5 Backup2Go is the ideal tool to backup workstations – regardless of their location.
In the office, on the road or at home, P5 allows mobile backups of laptops and desktops on central disk storage.

Workstation Backup

P5 Backup2Go can be installed and used within minutes. It lets the laptop initiate its own backup as soon as a connection to the server can be established.

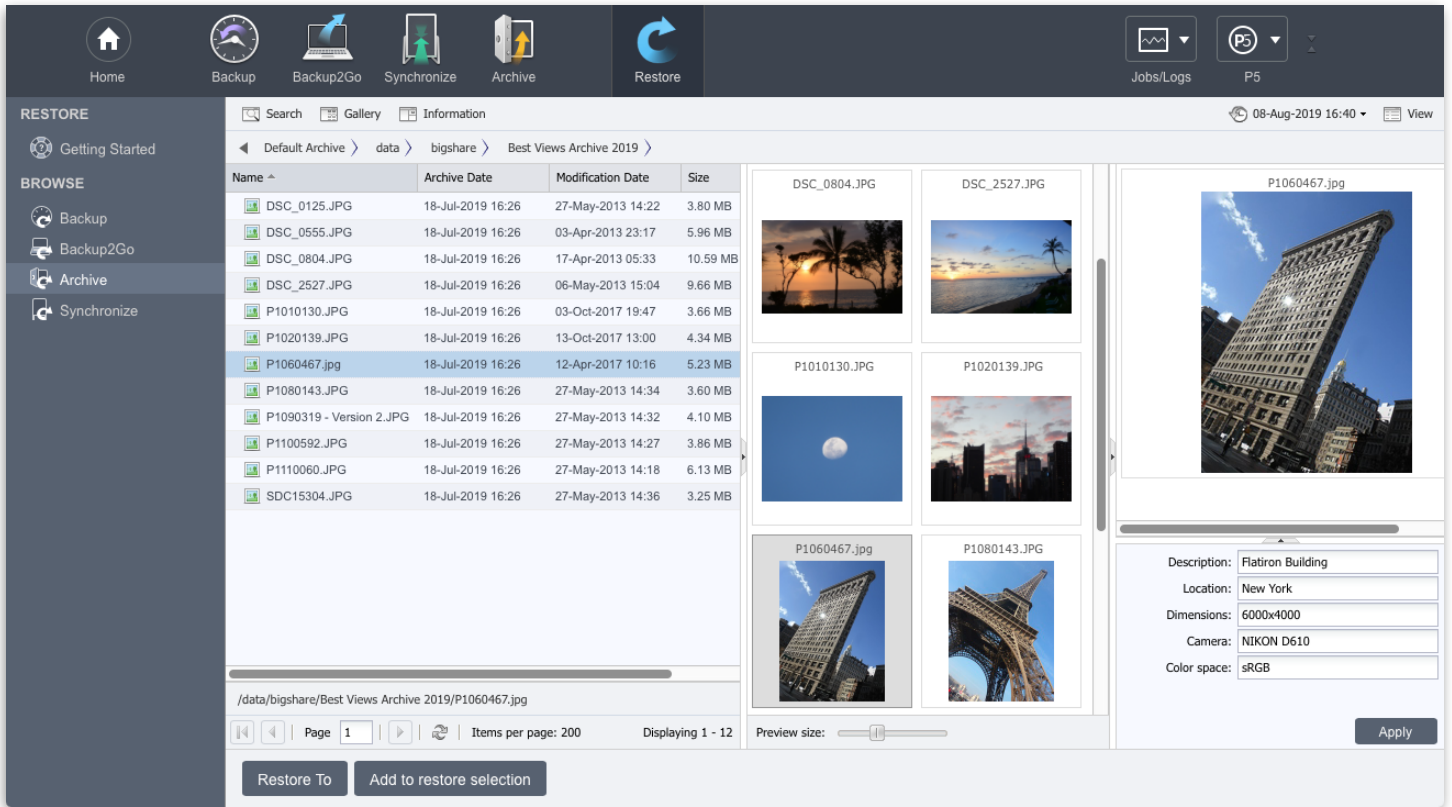
P5 Backup2Go tolerates interruptions during the backup process. If a workstation or laptop is shut down or loses the network connection, the backup process resumes automatically as soon as it comes back online. Partial backups are fully functional.

The administrator can allow users to restore their own data, from a single file all the way to a full file system restore (only Mac). The intuitive browser-based interface lets you restore with a few clicks. The backup index is displayed as a timeline. Users can view their file's history and retrieve a backed-up version from days, weeks or months before.

- Zero administration**
- Background process**
- Network and Internet**
- Timeline restore**



SOFTWARE HIGHLIGHTS	TECHNICAL FEATURES	OS CLIENT	OS SERVER
<ul style="list-style-type: none"> • Back up workstation data • To central disk storage • Easy user restore • Timeline view • Invisible background process • Near-zero management • Long retention times 	<ul style="list-style-type: none"> • Data Duplication (copy) • Full, incremental, progressive • Interruptible • Encryption • File Filter/Policies • Restore between platforms 	<ul style="list-style-type: none"> • macOS • Windows • Synology • NETGEAR 	<ul style="list-style-type: none"> • macOS • macOS Server • Windows • Linux • FreeBSD • Synology • NETGEAR



Near-Zero Management

P5 Backup2Go runs invisibly in the background. Administrators can limit network bandwidth and CPU use. Workstation templates allow flexible configuration of open or closed backup policies. Small and large workgroups can be handled according to their specific needs. Scalability is easy since one template can be used by tens or hundreds or more workstations.

Incremental Backup

Since files are continuously backed up, even during long out-of-office periods, the volume of data for each backup increment remains small. Hence, network and server loads are kept to a minimum.

Encryption

Files can be encrypted during transfer over a network and/or on the storage media. In addition, P5 also backs up access rights and ACLs of a file. The data is only unencrypted when restored to the workstation. This protects files against unauthorized access after a restore. Access to view a workstation's index of saved files is managed via group-based access rights.

File System Snapshots

To achieve even better data security, combine P5 Backup2Go with P5 Backup to set up a disk-to-disk-to-tape workflow. Workstations will be backed up to a central disk storage, which in turn is backed up to LTO tape. Tapes are the cheapest and most secure media on the market and can be stored offsite for safekeeping.

OPERATING SYSTEM REQUIREMENTS

macOS X	Intel x86 (64-bit): OSX 10.9 – 12.x Apple M1: OSX 11.x – 12.x
Windows	Server 2012R2, 2016, 2019, 2022 Windows 8.1, 10, 11
Linux	Intel/AMD x86 64-Bit systems with glibc version 2.15 are supported, including: OpenSUSE 12.2+/ SLES 12+, CentOS 7+/RHEL 7+/Fedora 19+, Ubuntu 12+, Debian 8+
FreeBSD	Version 12, 13 (Intel/AMD x86 64-Bit CPU)
Synology	DSM operating system 5.2+ - 7.0+ (Intel/AMD x86 64-Bit)
QNAP	QTS Operation System 4.3.0+, QTS hero, QTScloud (Intel x86 64-Bit)
NETGEAR	ReadyNAS OS 6.6.0+ (Intel/AMD x86 64-bit)
Virtualization	x86 – VMware, Parallels, Linux-Xen, Hyper-V

HARDWARE REQUIREMENTS

Memory	2 GB+
Hard Drive	1 GB for installation + variable (for backup/archive indexes)

BROWSER REQUIREMENTS

Safari	12+	Chrome	64+
Firefox	60+	Internet Explorer	11+