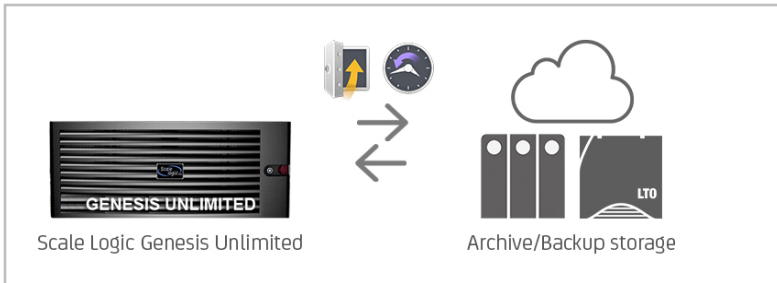


## Maximum Media Protection

### Complete Scale Logic Storage Solutions with Archiware P5

Time pressure puts data in media production at high risk. User errors are the most common threat. Storage fills up faster than ever due to large production formats. More accessible and powerful than ever, LTO is the storage solution that banks and insurance companies as well as all internet giants use.

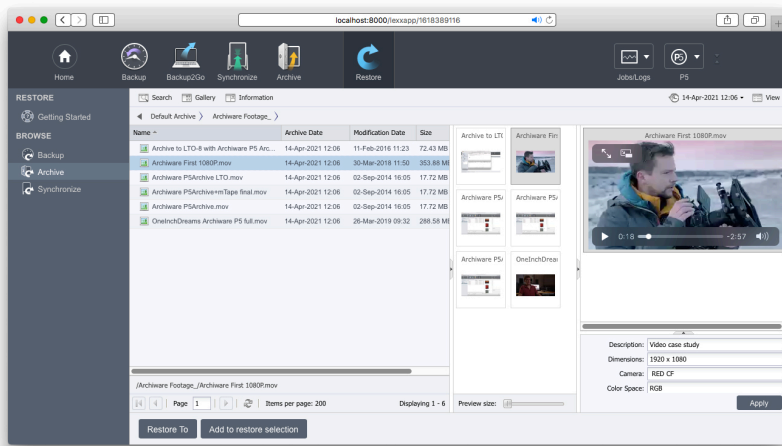


Archiving is the best method to build a central repository of completed productions and save space on high performance storage. Archiving to LTO tape offers the best long-term protection and lowest cost per TB of any medium. Browse, search and restore anything anytime. Scale Logic storage solutions like the Genesis Unlimited and the Genesis IAP (Integrated Application Platform) Servers combined with Archive.

**P5 Archive** and **P5 Backup** offer extremely attractive solutions for storage and data protection. Combined with **P5 Archive**, the result is an easy, reliable, robust and scalable solution. Add **P5 Backup** to save production data daily to disk, tape and cloud. Parallelization of multiple drives provides maximum throughput. Maximum data security is achieved by tape cloning and storing tapes off-site.

Scale Logic storage solutions and Archiware P5 Backup offer automatic Backup improving security while making life easier.

**Archiware P5 Archive** and **P5 Backup** are compatible with all of Scale Logic's servers and appliances. The **Genesis Unlimited** is a cost effective, media-centric appliance ideal for smaller creative workgroups looking for a high-performance Scale-Out NAS and SAN without all the infrastructure hassle. P5 installs seamlessly on top of the appliance, eliminating the need for additional server or networking hardware, saving customers money while simplifying their workflow and protecting their valuable assets.



#### Scale Logic Genesis Unlimited & P5 Archive Advantages:

- ✓ No per seat client cost
- ✓ Browse & Search Media with Previews/Proxies
- ✓ Ease User restore
- ✓ Customizable metadata fields
- ✓ Simple connectivity with FC, Gigabit or iSCSI
- ✓ Tailored bandwidth per user
- ✓ Real-time latency enhancements
- ✓ Solid & experienced tech support

#### Options, Configurations, Interfaces...

We are happy to advise:

[www.archiware.com](http://www.archiware.com)  
[www.scalelogicinc.com](http://www.scalelogicinc.com)

[sales@archiware.com](mailto:sales@archiware.com)  
[sales@scalelogicinc.com](mailto:sales@scalelogicinc.com)

