



# BACKUP. MADE IN GERMANY.

High-performance data backup and restore with Archiware P5 Backup.



## P5 Backup is software for professional use that can be set up within minutes.

P5 Backup lets you back up server data to disk or tape as well as back up and restore cross-platform. The module works seamlessly with P5 Synchronize and P5 Archive, allowing broad data availability options.

### Server Backup to Disk and Tape

P5's server backup is browser based and allows easy configuration, administration and monitoring – regardless of your location. The backup will include all your data as well as extended attributes, permissions, resource forks etc.

Through parallelization, P5 Backup software supports multiple drives, tasks and clients simultaneously. Even large data sets can be backed up in the shortest time possible. Backups are interruptible, and will be filled in automatically with the next run. Even partial backups are restorable.

Growing with your requirements, P5's modular design allows for optimal scaling to fit your needs. There are no limits to possible growth: you can easily add further Archiware products, hardware or media to expand your setup.

P5 server backup can be saved on disk and tape, while you can also use the same hardware to operate P5 Archive.

### Easy Restore

P5 Backup software stores your data in a platform-neutral format, allowing you to back up and restore data from and to any platform. Archiware's block-direct positioning allows for fast restore, no sequential seeking needed.

-  **VERSIONS & SNAPSHOTS**
-  **INTERRUPTIBLE**
-  **USER RESTORE**
-  **OFFSITE STORAGE**
-  **LONG RETENTION**

Snapshots offer restores from a particular point in time. The administrator can allow users to search, browse and/or restore, making Archiware P5 even more flexible.

#### SOFTWARE HIGHLIGHTS

- Back up server data
- To disk or tape
- Easy user restore
- Long retention times
- Tape cloning
- Offsite storage

#### TECHNICAL FEATURES

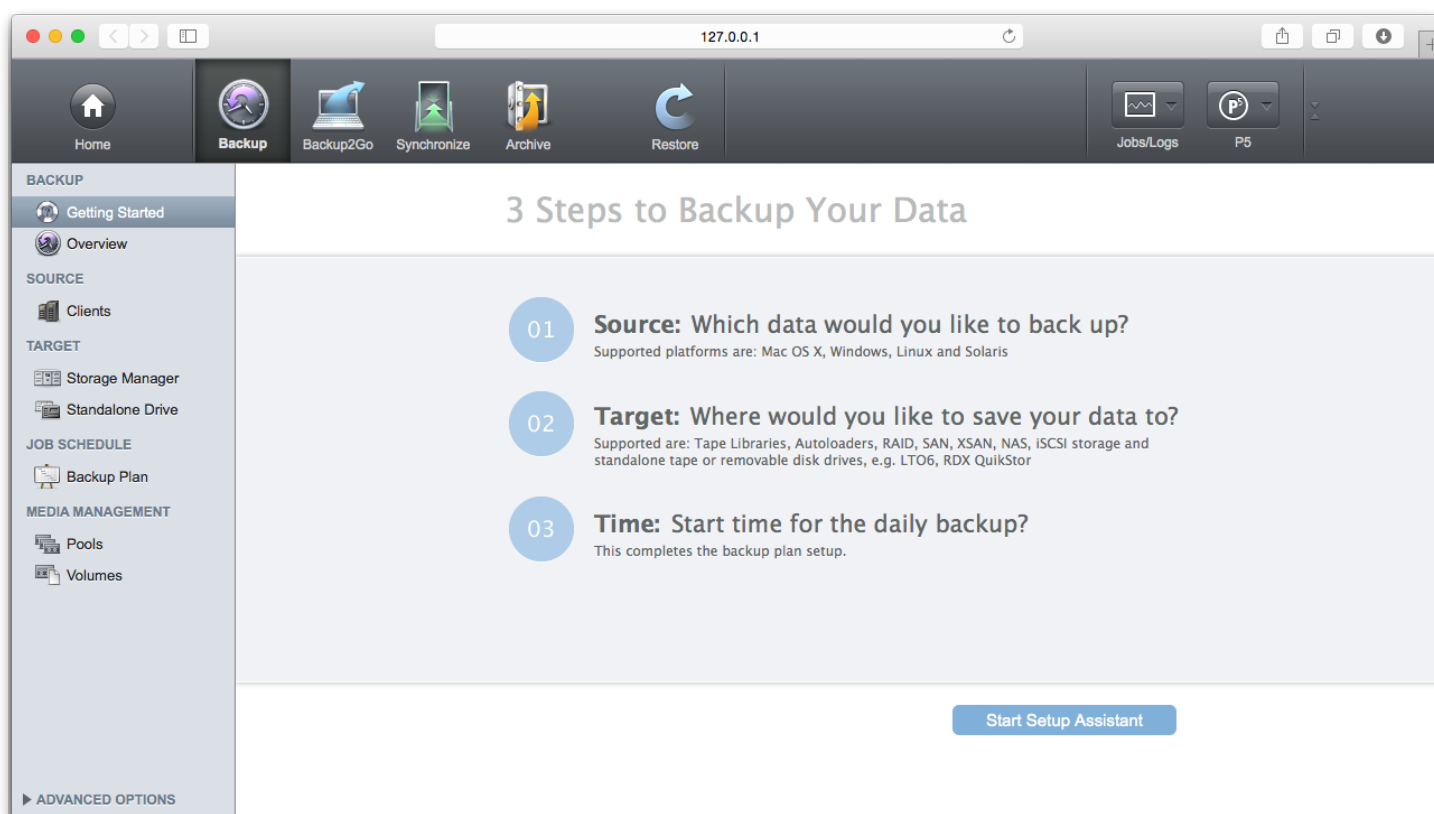
- Data Duplication (copy)
- Full, incremental, progressive
- Interruptible
- Encryption
- File Filters/Policies
- Restore between platforms

#### OS SERVER & CLIENT

- Mac OS X/macOS
- Windows
- Linux
- FreeBSD
- Solaris
- Synology

#### FILE SERVER

- ExtremeZ-IP
- Helios
- Xinet
- Netatalk



## Incremental Backup

Incremental Backup only backs up files which have been added or modified since the last backup run. Since files are continuously backed up, even during long out-of-office periods, the volume of data for each backup increment remains small. Hence, network and server loads are kept to a minimum.

## Offsite Safekeeping

Real security for your data can only be achieved through offsite backup. By cloning your backup on a second set of tapes or disks, you are ready for offsite storage for real

disaster prevention. Ideally, this second set should be stored in a safe place and not in your primary office. Encryption options protect your data during transfer and on the media.

## Encryption

Files can be encrypted during transfer over a network and/or on the storage media. In addition, P5 also backs up access rights and ACLs of a file. The data is only unencrypted when restored to the workstation. This protects files against unauthorized access after a restore. Access to view a workstation's index of saved files is managed via group-based access rights.

Combine P5 Backup with P5 Synchronize to set up a disk-to-disk-to-tape workflow.

### OPERATING SYSTEM REQUIREMENTS

<b>Mac OS X</b>	Intel 10.6 - 10.12
<b>Windows</b>	Server2008R2, 2012R1/R2, 2016 Windows 7, 8, 8.1, 10 (64-Bit)
<b>Linux</b>	Kernel 2.6.4+ (x86 64-Bit) For FS-events with inotify, Kernel 2.6.13+ As Backup2Go Server: Btrfs 0.19+
<b>Solaris</b>	Sparc Solaris 2.8+, x86 Solaris 2.10+ <b>Note:</b> Language package Unicode UTF-8
<b>FreeBSD</b>	9.2, 9.3, 10.1 - 10.3 (64-Bit)
<b>Synology</b>	DSM operating system 5.2+ (Intel x86 64-Bit)

### HARDWARE REQUIREMENTS

<b>Memory</b>	1 GB+
<b>Hard Drive</b>	1 GB for installation + variable (for backup/archive indexes)

### BROWSER REQUIREMENTS

<b>Safari</b>	5.1+	<b>Chrome</b>	4+
<b>Firefox</b>	3.5+	<b>Internet Explorer</b>	10+